



Guardian Wind Energy

catalog 2010



Introduction

Turbine Construction involves a number of high risk tasks from the time the equipment is being unloaded to the actual erection of the turbine. Consequently, the fall protection selected must be comfortable, lightweight, dependable and versatile to get the job done right.

Guardian Fall Protection makes the selection of the proper anchorage, body harnesses and connectors easy.

ANCHORAGE

Choose a simple lightweight anchor device that will hold up to the environment.

BODY HARNESS

The Cyclone Harness is specifically designed for the Wind Energy market. Lightweight, durable and comfortable. This vest style harness has a variety of buckle configurations, optional sewn-in hip pad and belt.

CONNECTORS

Selecting a high strength lanyard is a must as most Wind Energy applications expose the worker to an extended free-fall beyond industry norms.

RESCUE, ESCAPE & DESCENT

Rescue systems are mandatory and a requirement based upon the job task being performed. Select rescue and escape systems that are dependable and easy to use.

RESCUE TRAINING & CONSULTING

Effective training is essential for contractors and owners so that known risks can be mitigated and unknown hazards can be properly planned for. Workers are required to be trained by a Competent Person.

Cyclone Harnesses (Page 4)

R.D.R.L. (Page 12)

Gotcha Rescue Kits (Page 14)



Table of Contents

TABLE OF CONTENTS

03

04

FULL BODY HARNESSES

- Cyclone Harness
- Cyclone Tower Harness

06

ANCHORAGES & ANCHORAGE CONNECTORS

- Premium Cross Arm Strap
- Cable Anchorage Sling
- Vertical Beamer™
- Locking Steel Carabineer
- Wire Hook Anchorage
- D-Ring 2 Hole Anchor Plate
- D-Bolt Anchor

08

RETRACTABLE LIFELINES

- 11' Web Retractable Lifeline
- 30' Cable Retractable Lifeline
- Daytona Big Block Retractable Lifeline

09

CONNECTORS

- Tiger Tail Stretch Lanyard
- Stretch Lanyard
- 100% Tie-off Rope Lanyard

10

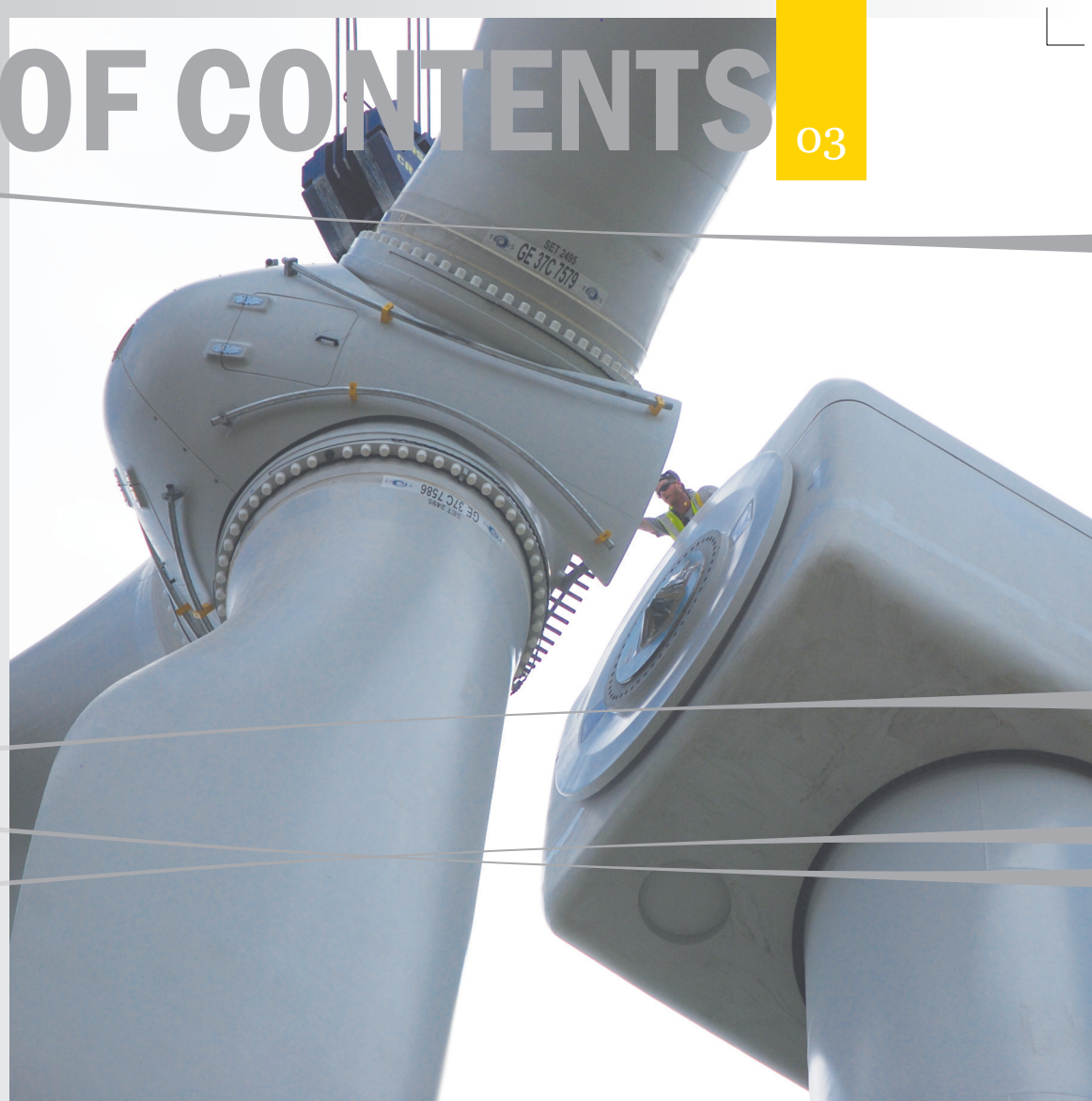
ROPE & CABLE SYSTEMS

- Polydac™ Rope
- Rope & Cable Grabs
- Cable Ladder System Kit

12

RESCUE, ESCAPE & DESCENT SYSTEMS

- Rapid Deployment Rescue Ladder
- Rescue Kits & Accessories
- Rescue Training & Consulting



Cyclone Harness



NEW



Cyclone HUV Harness

Cyclone Construction Harness

An industry first shoulder adjustment feature allows for an extremely comfortable fit. The Cyclone Harness can be used for ascending a ladder inside the Wind Turbine. Designed with the unique X-back which leaves the harness straps tangle free. An ideal combination for fall arrest, work positioning, rescue and rope access applications.

Attachment Elements: 2 ideally positioned chest attachment textile loops
1 Dorsal attachment D-ring for Fall Arrest
2 Side D-rings (Cyclone Construction only)

Adaptability: Fully adjustable shoulder, chest strap, leg straps & waist belt (Cyclone Construction only)

Convenience: Shoulder & leg straps have combination buckles for easy adjustment. Web keepers on shoulder straps for easy placement of free lanyards. Tool holder loops at the back (Cyclone Construction only)

Ergonomics: Specially cushioned mesh net has been used for better shock absorption & comfort of the user. Ideally positioned sit-strap for extended comfort (Cyclone Construction only)

When ordering, add "-FD" to the end of the part number for a front D-ring style harness.

Part#	Size	Chest	Legs	Waist	Weight
CYCLONE HUV HARNESS BUCKLE OPTIONS					
11021	S - L	Pass-Thru	Tongue Buckle		9.00
11022	XL	Pass-Thru	Tongue Buckle		9.50
11023	S - L	Pass-Thru	Pass-Thru		8.00
11024	XL	Pass-Thru	Pass-Thru		8.50
11025	S - L	Quick-Connect	Quick-Connect		7.00
11026	XL	Quick-Connect	Quick-Connect		7.50
CYCLONE CONSTRUCTION HARNESS BUCKLE OPTIONS					
11027	S - L	Pass-Thru	Tongue Buckle	Tongue Buckle	9.50
11028	XL	Pass-Thru	Tongue Buckle	Tongue Buckle	10.00
11029	S - L	Pass-Thru	Pass-Thru	Tongue Buckle	8.50
11030	XL	Pass-Thru	Pass-Thru	Tongue Buckle	9.00
11031	S - L	Quick-Connect	Quick-Connect	Tongue Buckle	7.50
11032	XL	Quick Connect	Quick Connect	Tongue Buckle	8.00



1 QUICK-CONNECT BUCKLE

2 STITCHING PATTERN

3 WORK POSITIONING BELT

Extremely easy to use with single-hand adjustment. Made from top-grade corrosion-resistant steel.

Unique aesthetic stitch pattern for enhanced stitching strength with smart styling.

The side D-rings with knitted mesh pads are specially bent for extra comfort while working.

Cyclone Tower Harness



05

The newest addition to our line of harnesses, the Cyclone Tower Harness is the latest in engineering technology for body harnesses. Guardian's newest harness combines durability, comfort and versatility for an exceptional value.

The Cyclone Tower Harness is ideal for:

- Wind Construction
- Wind Maintenance
- Wind Rescue & Evacuation

Attachment Elements: 1 Dorsal & 1 Sternal D-ring for Fall Arrest
1 Ventral D-ring at waist level in front for Rope Access & 2 side D-rings on the sides

Adaptability: Adjustable shoulder, leg straps & waist belt

Convenience: Shoulder, waist & leg straps have combination buckles for easy adjustment. Tool holder loops & an additional bigger handle at the back for keeping extra carabiners & accessories. Web keepers on shoulder straps for easy placement of free lanyards.

Ergonomics: Ideally positioned elasticated straps for extended comfort. Specially cushioned mesh net has been used for better shock absorption & comfort of the user.

NEW



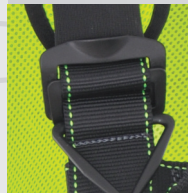
1 SHOULDER STRAPS

Fully padded straps with comfortable knitted mesh pads for better shock absorption & air circulation.



2 WORK POSITIONING BELT

The side D-rings with knitted mesh pads are specially bent for extra comfort while working.



3 COMBINATION BUCKLE

With a unique pull-up grip, this buckle is very easy to use. Can be tightened & loosened single handedly.



4 LEG STRAPS

The distinctively placed fully padded straps with automatic buckles for easy adjustment.



Part#	Size	Chest	Legs	Waist	Weight
11033	S - L	Quick Connect	Quick Connect	Combination	7.50
11034	XL	Quick Connect	Quick Connect	Combination	8.00

ANCHORAGE CONNECTORS

Anchorage Connectors

3' PREMIUM CROSS ARM STRAP

The Premium Cross Arm Straps are twice as durable with dual reinforced webbing and heavy duty stitching. The heavy duty wear pad protects the structural webbing against abrasion and snags. The Premium Cross Arm Strap features a large D-ring and standard size D-ring for pass-thru. This increases the versatility of length adjustment. To shorten the anchorage connector simply wrap the webbing around the anchorage and pass through the large D-ring.

4' CABLE ANCHORAGE SLING

Galvanized steel 5/16" wire Cable Anchorage Slings are used by looping around a beam or anchorage and connecting ends using a carabineer. This convenient anchor point is durable and easy to use. The cable resists wear around sharp edges, but to protect anchorage surfaces a coated cable is available. End point options provide solutions for all your hardware and connection needs.

VERTICAL BEAMER™

- Stationary attachment point for an I or H beam
- Lightweight
- Attaches to vertical, angled or horizontal columns
- Attaches by hand tightening with no tools required
- Can accommodate a retractable lifeline
- Will accommodate vertical & horizontal cable lifelines
- Flange size: 3" – 12"
- Flange thickness: up to 1"

LOCKING STEEL CARABINEER

- Easy to use one hand operation
- Securely attach lanyards or lifelines to anchorages
- Offer maximum strength up to 5,000 pounds

Premium Cross Arm Strap

Cable Anchorage Sling

Vertical Beamer™ & Carabineer



Part#	Size	Description	Weight
10785	3'	Premium Cross Arm Strap w/ Large & Small D-ring	1.30
10420	3'	Galvanized Cable w/ 3" O-ring & Snaphook end	2.20
00140		Vertical Beamer™	8.00
01813-S		Locking Steel Carabineer – 3/4" gate	0.50

ANCHORAGE CONNECTORS

07

WIRE HOOK ANCHORAGE

- Stainless Steel
- Connects to various anchor points including:
 - scaffolding*
 - railings*
 - small I-beams*
- Opens by squeezing spring loaded hook
- Available with attached shock absorbing lanyards
- Double leg option has 2 wire hook ends

D-RING 2 HOLE ANCHOR PLATE

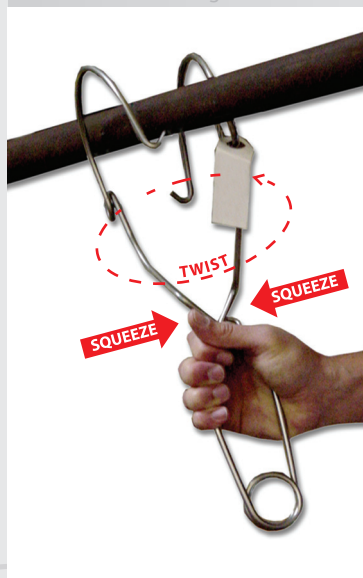
- Bolt or weld to structure
- Two ½" attachment holes
- Stainless steel
- Plate size ¼" x 2" x ¼"

D-BOLT ANCHOR

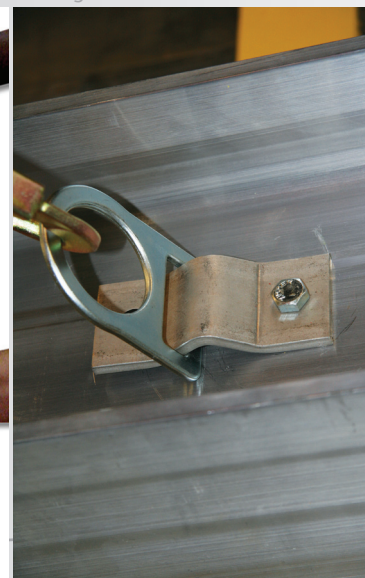
D-Bolt Anchors are designed as the intermediary for securing a connecting device to an anchorage point



Wire Hook Anchorage



D-ring 2 Hole Anchor Plate



D-bolt Anchor



Part#	Size	Description	Weight
01860		Wire Hook Anchorage	0.90
00360	¼" x 2" x ¼"	D-ring 2 Hole Anchor Plate	3.00
00370	½" hole	Forged Anchorage Connector (no bolt)	3.50

RETRACTABLE LIFELINES

Retractable Lifelines

11' WEB RETRACTABLE

- Ergonomic frame makes handling more comfortable
- Durable aluminum housing
- Dependable performance
- Quick-action braking system
- Cost effective & priced competitively
- Meets or exceeds all applicable OSHA & ANSI standards
- No recertification required, considered as disposable unit
- Manufactured in the U.S.A.

25' STAINLESS STEEL CABLE RETRACTABLE

- Compact & lightweight design
- Durable aluminum housing
- High strength composite cable guide
- Stainless steel & non-corrosive components extend the life of the unit
- Quick-action braking system
- Cost effective & priced competitively
- Meets or exceeds all applicable OSHA & ANSI standards
- Manufactured in the U.S.A.

DAYTONA BIG BLOCK RETRACTABLE

- Priced up to 20% less than like-in-kind units
- Easy to carry
- High strength composite cable guide
- Stainless steel & non-corrosive components
- Quick-action braking system
- Manufactured in the U.S.A.
- Proprietary ABS reinforced housing
- Meets or exceeds all OSHA & ANSI standards
- Comes with swivel top, carabiner & tag line; can be ordered w/ rebar hook
- Reflective 3M stickers for easy recognition

Part#	Size	Description	Weight
10900	11'	1" Webbing w/ Carabiner, Swivel Top & Snap Hook	9.00
10932	25'	3/16" SS Cable w/ Carabiner, Swivel Top, SH & Tag	17.00
10964	65'	Daytona Big Block Retractable Lifeline	18.00
10966	50'	Daytona Big Block Retractable Lifeline	16.00
10967	65'	Daytona Big Block Heavy Duty Retractable Lifeline	18.00
10968	50	Daytona Big Block Heavy Duty Retractable Lifeline	16.50

Daytona Retractable

11' Web Retractable

25' Cable Retractable

Connectors

TIGER TAIL STRETCH LANYARD

Our Tiger Tail Stretch lanyard helps to reduce trip hazards by stretching from 4½' to 6'. The stretch design lessens the potential of tripping, dragging and snagging during work. Compliant with ANSI Z359-2007. This 3,600 lbs rated lanyard provides 100% tie-off and comes with Rescue D-rings. The Tiger Tail Stretch Lanyard is specifically designed for use when connecting at your feet. The lanyard is 6 feet long with 2 ¼" gate opening.

NEW



STRETCH LANYARD

Our traditional Stretch lanyard helps to reduce trip hazards by stretching from 4½' to 6'. The stretch design lessens the potential of tripping, dragging and snagging during work. Available in many different styles including single leg or double leg for fall arrest and fall restraint. The sewn in stretch design eliminates the need for a shock pack making this lanyard lightweight and easy to inspect. Compliant with ANSI Z359-2007. Includes large snap hooks designed for harsh environments.

NEW



100% TIE-OFF ROPE LANYARD

100% Tie-off Rope Lanyard comes with 3,600 lbs rated snap hooks. It is lightweight, durable and compact. Made from 5/8" Polydac™ rope.

NEW



Part#	Size	Description	Weight
01298	4½' – 6'	Double Leg Stretch Lanyard w/ Rebar Hooks	5.00
11903	4½' – 6'	Double Leg Tiger Tail Stretch Lanyard w/ Rebar Hooks	5.00
01130	4½' – 6'	Double Leg Tiger Tail Stretch w/ Rebar Hooks & D-rings	5.50
01131	6'	Double Leg 100% Tie-off Rope Lanyard w/ Rebar Hooks	5.00

Rope & Cable Systems



Polydac™ Rope Lifeline

NEW

POLYDAC™ ROPE LIFELINE

Polydac™ rope is one of the strongest conventional ropes available today. The Polydac™ rope is 100% resistant to rot or mildew even if stored wet. Polydac™ rope absorbs more energy than any other type of rope available today; 12 times as much as Manila and 50% more than polyester. The working load elongation is 8%. Polydac™ rope has excellent resistance to alkalis and most solvents. Polydac™ rope provides good abrasion protection, but UV rays still degrade all synthetic fibers. Polydac™ rope has a melting point of over 300° degrees.

ROPE & CABLE GRABS

- Removable rope grabs are easy to install
- Fits 5/8" or 1/2" safety ropes
- Locks automatically when a fall occurs
- Available with or without 18" extension lanyard
- Lanyard keeps device within reach
- Stainless steel cable grabs fit 3/8" or 5/16" cable & travel in both directions automatically
- Squeeze to move positioning device, locks automatically
- Can be ordered with a shock absorber

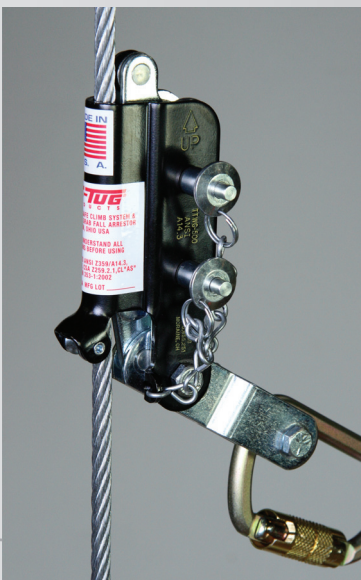
Rope Grab (01505)



Rope Grab (01503)



Cable Grab



Part#	Size	Description	Weight
11329	25'	Polydac™ Rope w/ Snaphook end	3.50
11330	30'	Polydac™ Rope w/ Snaphook end	4.00
11331	50'	Polydac™ Rope w/ Snaphook end	5.00
11332	75'	Polydac™ Rope w/ Snaphook end	7.00
11333	100'	Polydac™ Rope w/ Snaphook end	9.00
11334	150'	Polydac™ Rope w/ Snaphook end	13.00
11335	200'	Polydac™ Rope w/ Snaphook end	17.00
01500		Rope Grab w/ Attached 18" Extension Lanyard	2.00
01503		Rope Grab w/ Attached 3' Shock Absorbing Lanyard	3.00
01505		Rope Grab (no extension)	1.30
01507		Rope Grab w/ Attached Shock Pack	2.60
01510		Cable Grab for 3/8" Cable	2.40
01515		Cable Grab for 5/16" Cable	2.30
01520		Rope Positioning Device Assembly	1.75

Cable Ladder System Kit

CABLE LADDER SYSTEM KIT

The Guardian Fall Protection Ladder System is ideal for use as an internal ladder inside wind turbines. Unit is available in custom lengths and in Stainless Steel.

- Sealed anchor head with impact attenuator
- Permanently secured forged eye bolt
- Permanently swaged cable sleeves
- Adjustable clamp brackets
- HD steel square tubing supports
- Cable standoffs (every 25 feet)
- 3/8" diagonal galvanized wire rope
- Cable grabs (01510 & 01515) are sold separately

Part#	Size	Description	Weight
04810	100'	Cable Ladder System Kit	58.00
04820	200'	Cable Ladder System Kit	88.00
04830	300'	Cable Ladder System Kit	118.00



RESCUE, ESCAPE & DESCENT

Rapid Deployment Rescue Ladder

1 PREMIUM CROSS ARMS

The straps are twice as durable with dual enforced webbing and heavy duty stitching. Pass-thru design for versatility of length adjustment.

2 POMPIER HOOKS

- 3,600 lbs rated hooks
- One hand operation
- Securely attach lanyards or lifelines to anchorages

NEW

While 300 feet off the ground and rescuing a fellow co-worker every second can count. The Rapid Deployment Rescue Ladder (R.D.R.L.) is an industry first- employing a simplistic approach to a self or assisted rescue.

Rope ladders are difficult and create further fatigue on the rescuer and the fallen victim. The R.D.R.L. is specially designed and tested for the Wind Energy market. The durable ladder is safe for work positioning while rescuing a victim. The unique ladder standoffs make footholds easier and making self-rescue more likely.

The purpose of this Rapid Deployment Rescue Ladder is to close the loop on safety – to give you a reliable option when you need it. The rescue ladder can be deployed in seconds and save the life of a fellow co-worker and reduce the exposure of rescue personnel.

RAPID DEPLOYMENT RESCUE LADDER

- Drastically reduces rescue time
- Simple training
- Easy to use
- The only rescue device on the market for the Wind Energy field that doesn't cost thousands of dollars to buy & thousands of dollars for training.

RAPID DEPLOYMENT RESCUE LADDER KIT

- One 12 ft Aluminum Ladder
- Two 3 ft Premium Cross Arm Straps w/ Large & Standard D-rings (10785)
- Two 3,600 lbs rated Pompier Hooks (01850)
- Weather grade carrying pack & storage container
- Instructional DVD & card

Part#	Description	Weight
15022	Rapid Deployment Rescue Ladder	17.00
15023	Rapid Deployment Rescue Ladder Kit	25.20

RESCUE, ESCAPE & DESCENT

13

R.D.R.L. Deployment Steps

The deployment of the R.D.R.L. is simple and fast. The system can be easily stored in any nacelle for quick access.

The first 3 steps must be completed prior to moving out to the top of the nacelle. If a worker falls while performing construction or maintenance tasks, the kit is ready for immediate use.



1 STEP

Locate the R.D.R.L. upon entry into the nacelle.



2 STEP

Remove the R.D.R.L. & the Pommer Hooks from the weather-proof storage bag.



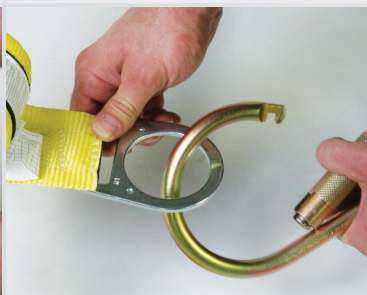
3 STEP

Attach the Pommer Hooks to the swaged eyes at the top of the R.D.R.L. & put the ladder back to the storage bag.



4 STEP

Attach the Premium Cross Arm Straps to the fall protection anchor rail.



5 STEP

Attach the Pommer Hooks to the Premium Cross Arm Straps.



6 STEP

Deploy the R.D.R.L. to one side of the fallen victim. Worker now can self-rescue or rescuer can easily reach the victim to assist in a fast rescue.



Gotcha Shark Rescue Kit



Gotcha Rescue Kit

Part#	Description	Weight
53027	Gotcha Rescue Kit w/ 160 ft Rope	15.00
53028	Gotcha Rescue Kit w/ 325 ft Rope	24.00
53029	Gotcha Rescue Kit w/ 490 ft Rope	33.00
53030	Gotcha Rescue Kit w/ 655 ft Rope	42.00
53031	Grabba – Optional add to Gotcha Rescue Kit	0.70
53036	Gotcha Shark Rescue Kit w/ 215 ft Rope	18.00
53037	Gotcha Shark Rescue Kit w/ 325 ft Rope	23.00

GOTCHA RESCUE KIT

The Gotcha Rescue Kit is a unique solution to problems faced by all workers at height who use PPE for protection against falls. Whereas most rescue provisions have focused on the more extreme activities carried out at height, the Gotcha Kit is designed for tradesmen who use common items of fall protection. In the event of a fall their situation, if suspended in a harness, is just as serious as any other worker and a swift recovery is essential.

The kit will work effectively with conscious or unconscious victims, the rescuer can carry out the rescue from a point of safety, the rescue can be carried out by a single person, no cutting is required and you can raise or lower the victim in a controlled manner to the nearest point of safety.

- Suitable for rescue from lanyards & retractables
- The casualty is raised to release from their original attachment
- The victim can be raised or lowered
- No assembly is required by the user
- The kit is for raising or lowering a single person
- Color coded for simplicity

GRABBA

The Grabba is an optional add-on to the Gotcha Kit. It enables the rescue of persons suspended from retractable fall arrest devices while using rope or wire. The Gotcha Kit should be attached to the Grabba. The Grabba is then mounted on the rope or wire that the victim is suspended from. The Gotcha Kit is then extended so the Grabba slides down the rope or wire to the victim. When it reaches the victim the device locks onto the dorsal D-ring. When pulled upwards the Grabba grabs the wire or rope and a normal Gotcha Kit rescue can now be performed, raising or lowering the casualty to a point of safety.

GOTCHA SHARK RESCUE KIT

A rescue kit that is ideal for those who consider work at height a key part of their skill such as those who work on towers and masts.

- Suitable for rescue from lanyards, vertical fall arrest systems & web SRL's
- The victim is released by cutting attachment with a unique bladeless cutter
- The Shark is a descent rescue kit
- No assembly is required by the user
- The rescuer accesses the victim in order to recover them
- Two person use – rated for loads up to 660 lbs in normal use

RESCUE, ESCAPE & DESCENT

Gotcha Rescue Kits

15

GOTCHA CRD RESCUE KIT

The CRD is a constant rate descent device suitable for rescue and evacuation. It is suitable for rescue from vertical situations where you can access the casualty.

- Suitable for evacuation from high structures where constant rate lowering & minimal user input are required
- The victim can be lowered to safety or raised for limited distances
- The user can descend to safety at a constant rate controlled by the device
- No assembly is required by the user
- A single person can descend to safety
- Multiple evacuation – once the first user has safely descended the system can be used by additional users in quick succession
- Two person use – the Gotcha CRD is rated for loads up to 495 lbs
- For loads up to 330 lbs it is available in lengths of up to 1310 ft

GOTCHA FIRE & RESCUE KIT

This is a rescue kit for the professionals and is ideally suited to fire and rescue services. The FR kit provides a flexible solution to rescues involving vertical, horizontal and tensioned lines.

- Suitable for rescue from vertical and horizontal situations where a flexible line system is required that can be tensioned or released in a controlled manner. This will allow raising, lowering and tensioning operations.
- Victims can be recovered without the need to cut them free
- The Gotcha FR Kit is capable of rescuing vertically up and down as well as horizontally by tensioning
- No assembly is required but the kit can be changed from lowering mode into raising mode by altering the configuration
- Assisted rescue – the Gotcha FR Kit can be used in many ways and is designed to work in conjunction with a second kit to provide additional security where required
- A single kit is capable of lowering or raising a single casualty
- Two person use – two kits used together will provide a secondary system suitable for lowering a rescuer to victim and then raising or lowering both the rescuer and the victim to a point of safety
- Capable of being used for lowering operations up to that maximum length

Gotcha CRD Rescue Kit



Gotcha Fire & Rescue Kit

Part#	Description	Weight
53032	Gotcha CDR Rescue Kit w/ 195 ft Rope	22.00
53033	Gotcha CDR Rescue Kit w/ 325 ft Rope	25.00
53034	Gotcha Fire & Rescue Kit w/ 195 ft Rope	20.00
53035	Gotcha Fire & Rescue Kit w/ 325 ft Rope	23.00

RESCUE, ESCAPE & DESCENT

Self & Assisted Rescue Kits



Self-Rescue Kit (SRK-11™)



NEW

SELF RESCUE KIT (SRK-11™)

The SRK-11™ is a *true* Self-Rescue Kit: each worker has his own kit, assuring independent, immediate self-rescue capability! The SRK-11™, Tech Safety Lines' unique emergency egress and Self-Rescue Kit, utilizes a high-strength line with a tensile strength exceeding 7000 lbs. The SRK-11™ features the Military Compact Descender, the MCD. This descent device provides a rapid means of descent – safeguarded by both a passive and active braking system.

The SRK-11™ Self-Rescue Kit is certified by UL as being ANSI Z359.4-October, 2007 compliant which is the ANSI standard for Safety Requirements for Assisted-Rescue and Self-Rescue Systems, Subsystems and Components.

ASSISTED RESCUE KIT (ARK)

This Tech Safety Lines Assisted Rescue Kit allows just one person to successfully perform a rescue in minutes! This rescue system is based upon three basic steps:

1. Access victim
2. Raise the victim to release pressure on fall
3. Lower him or her easily to the ground



Assisted Rescue Kit (ARK)



NEW

Innovative gear includes:

- Telescopic pole used to reach victim
- Components for a variety of situations
- Proven track record
- Adaptable for Real-Life Rescues

2-DAY TRAINING (EDU-15005/6)

Students that attend our 2-day class and learn to use both SRK-11™ & ARK successfully, will be certified by Tech Safety Lines as Authorized Rescuers for their company.

Part#	Description	Weight
15005	Assisted Rescue Kit (ARK)	40.00
15006	Self-Rescue Kit (SRK-11™)	7.00
EDU-15005/6	Authorized Rescuers 2-Day Training	N/A
53038	Gotcha Suspension Loop Rescue Kit	(page 17) 1.50
53040	Gotcha Evacuation Rescue Kit	(page 17) 5.00
10817	Rescue Ladder	(page 17) 8.00
10730	Leg Up Suspension Trauma Strap	(page 17) 0.50

RESCUE, ESCAPE & DESCENT

Gotcha Rescue Kits & Accessories

17

GOTCHA EVACUATION KIT (53040)

The Gotcha Evacuation Kit is a lightweight, self-contained kit intended for evacuation of stranded personnel from elevated work areas – an evacuation kit that is ideal for use on elevated machinery. The kit is suitable for evacuation from automated racking systems, overhead cranes, elevated work platforms and high bay storage areas.

- No cutting or assembly is required by the user
- Rated for loads up to one person use
- Maximum Working Length – 65 ft descent rescue kit
- Anchoring sling & connecting steel carabineers
- Auto-lock descender
- Rope protection

GOTCHA SUSPENSION LOOP (53038)

The use of a Suspension Loop is an addition to any rescue system that can help to alleviate the effects of suspension in a harness. However, this must not be seen as a solution to the problem and is also of little use to unconscious victims. It can therefore be classed as an intermediate measure and rescue must follow.

RESCUE LADDER (10817)

When working out of bucket trucks, aerial lifts, or any elevated work surface, it is important to be prepared at all times with this portable 14 ft Rescue Ladder. The Rescue Ladder device attaches to an anchor point and then to your harness. In the event of a fall, the ladder deploys and allows the worker to rescue him or herself.

LEG UP SUSPENSION TRAUMA STRAP (10730)

The Leg Up Suspension Trauma Strap was designed to address a serious problem associated with arrested falls called Suspension Trauma. The purpose of Leg Up is to give the user relief while waiting to be rescued.

The Leg Up consists of a web bridle with foot stirrups and adjuster, contained in a pouch. It can easily be retro fitted to any full body harness, without altering the harness.

During the fall arrest, the Leg Up will partially deploy, making it easy for the user to fully pull it from the pouch. The user would then place their feet in the two stirrups. With the legs lifted, the user would then tighten the adjuster strap and cleat it. The user can now stand or maintain a seated position.



Gotcha Suspension Loop

Rescue Ladder

Leg Up Suspension Trauma Strap



Rescue Training & Consulting

Often overlooked by many workers, safety professionals, and companies is the need to properly implement a rescue plan in the event an employee falls while working from an elevated surface. While many employers mandate the use of fall protection, little, if any, attention is paid to how a worker will be rescued if a fall occurs, even though it is a clear OSHA requirement. Plan further than this first life/injury saving step.

QUESTIONS TO ASK YOURSELF

- What is your plan in the event a worker falls & needs to be rescued?
- What is your plan in the event a worker falls, injured, & needs to be rescued?
- What is your plan in the event a worker falls at a remote location?
- What is your plan in the event a worker falls while performing a task alone?
- What is your plan in the event more than one worker falls?
- What is your plan if the worker falls while using a retractable vs. a lanyard?

Guardian offers a large variety of training services, including the ability to transport full Fall Protection and Rescue Training seminars to your job site or facility.

Guardian Fall Protection State-of-the-Art training facilities:

- Kent, WA
- Martinsburg, WV
- Burbank, CA
- Sanford, NC

Courses offered:

- Wind Energy Fall Protection & Rescue
- Rescue
- Competent Person Fall Protection
- OSHA 30 hours
- OSHA 10 hours
- OSHA 10 hours Construction Training for Wind Energy
- Lock out / Tag out
- Confined Space
- Fall Protection

NEW

NEW

*This training simulator can be transported to your facility.
Please call toll free at (800) 466.6385 or visit www.guardianfall.com for more information.*

Rescue Training & Consulting

Specially designed for the Wind Energy market. Educate your workers and comply with OSHA fall protection standards with Guardian Fall Protection:

- Class size limited to 20 people
- Deadline for registration is 1 week before the class

COMPETENT PERSON TRAINING

The Competent Person course is designed for superintendents, managers of authorized persons or individuals working at height.

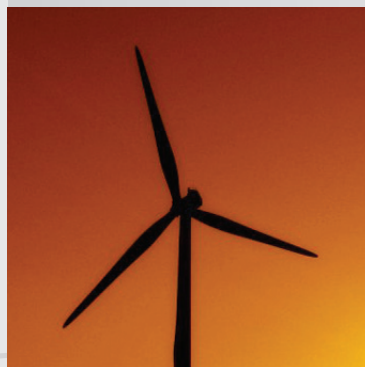
- Fall protection system analysis
- OSHA and ANSI Z359.2 standard regulations relating to Fall Protection
- Fall hazard elimination
- Equipment inspection
- Passive Fall Protection Systems
- Fall Restraint systems
- Fall Arrest systems:
 - Personal fall arrest systems*
 - Nets*
 - Safe work zones & more*
- Fall protection rescue procedures
- Selection and use of non-certified anchorages
- Competent Person role and duties

AUTHORIZED PERSON TRAINING

- How to recognize a fall protection hazard
- Elimination of fall protection
- Fall protection regulations and rules
- Usage of written fall protection procedures
- Inspection of fall protection equipment components
- Fall protection rescue guidelines

ANSI Z359.2-2007, part of the Z359 family of standards, requires employers to meet a number of mandates in relation to training. This covers program administration, documentation, training specifics, record keeping, etc.

Please visit www.guardianfall.com for class dates and registration.





www.guardianfall.com